

062637

RECEIVED  
LARAMIE COUNTY

Northwest corner Section 29 T18N R65W CHEYENNE, WY.  
CERTIFIED LAND CORNER RECORDATION

OCT 5 PM 3 01

DESCRIPTION OF CORNER EVIDENCE FOUND, AND ORIGINAL RECORD (If known)

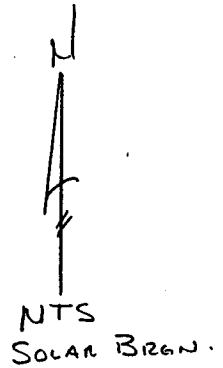
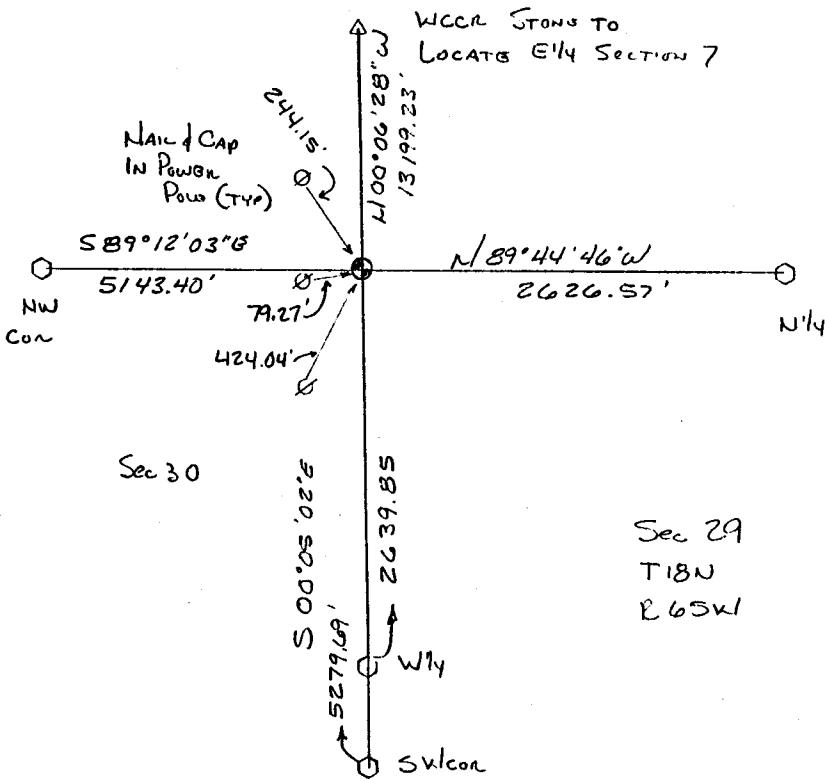
The corner falls in a North South County Road, and probably has been removed during road construction. Laramie County shows "WCCR" stones wereset at the corner, no evidence of the WCCR stones was found. We called the corner lost and re-set by double prorate method.

DESCRIPTION OF MONUMENT AND ACCESSORIES ESTABLISHED TO PERPETUATE THE ORIGINAL LOCATION OF THIS CORNER:

Set a No5 rebar with a Corps of Engineers Brass Cap 1' below the road surface at the calculated position for the corner. Tied to existing power poles as shown in the sketch.

AUG 24 1989

SKETCH, WITH COURSE AND DISTANCE TO ADJACENT CORNER IF DETERMINED IN THIS SURVEY. (May Sketch or Paste Reproduction on Reverse Side.)



I, Wallace C. Muscott certify that I have carefully performed or reviewed the work done on the diagrammed corner as reported on this recordation form and approve the same.

Wallace C. Muscott  
Signature of Surveyor

3830  
Registration No.

STATE OF WYOMING,  
Office of Clerk and Recorder,  
County of \_\_\_\_\_

This "corner record" was filed for record on the \_\_\_\_\_ day of \_\_\_\_\_, 19\_\_\_\_, was noted on the cross-index plat and is assigned page No. \_\_\_\_\_, in book No. \_\_\_\_\_.

Cross Index No.	County Official			
	R 5	T. 18N	R. 65W	6th Mer.
_____	_____	_____	_____	Mer.
_____	_____	_____	_____	Mer.
_____	_____	_____	_____	Mer.
_____	_____	_____	_____	Mer.
_____	_____	_____	_____	Mer.
_____	_____	_____	_____	Mer.
_____	_____	_____	_____	Mer.